

Carpool for Preschool

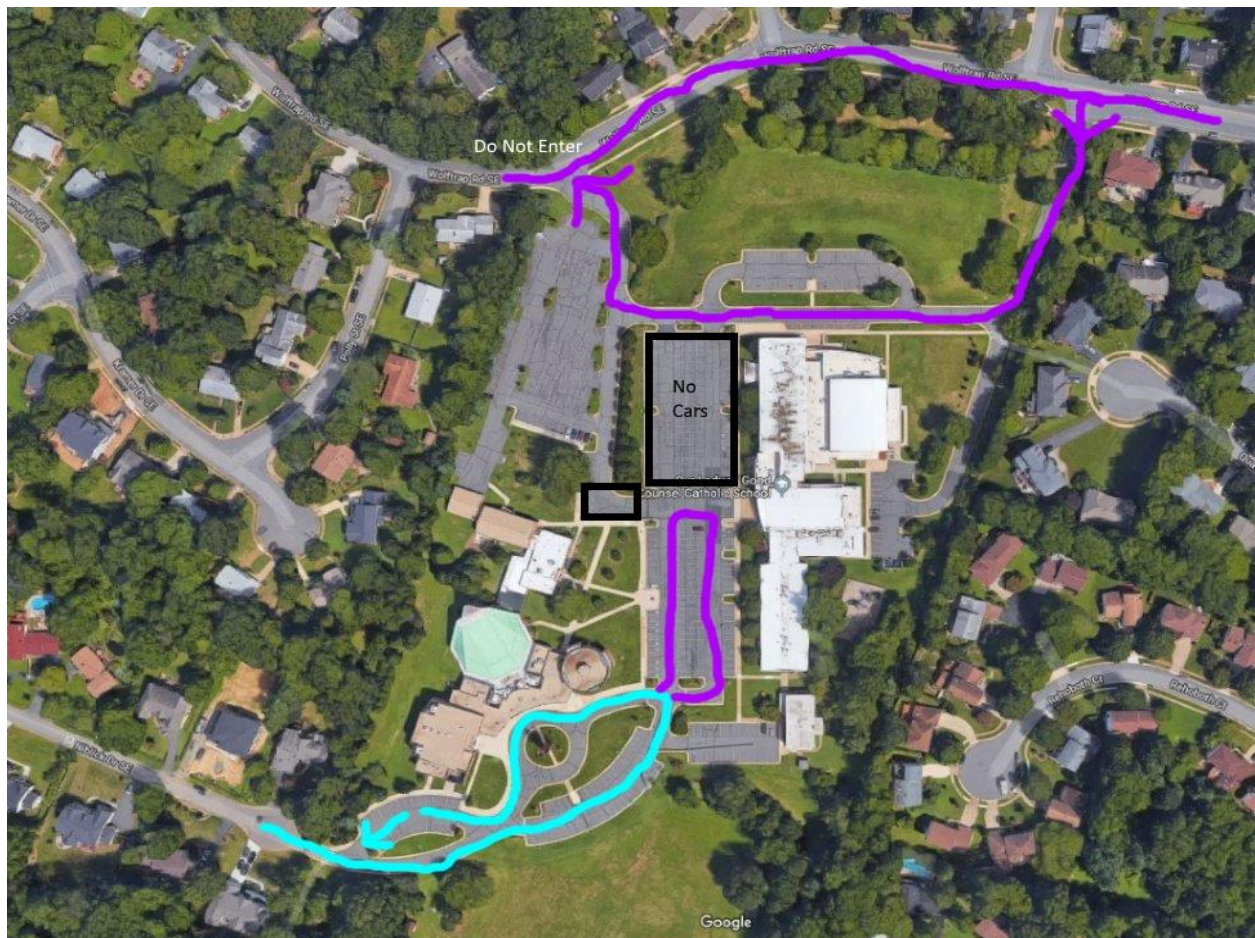
Morning Drop-off

Purple line at the top indicates drop-off for “big school” students from Wolftrap Road.

Preschool families should enter from Niblick Drive and follow the aqua line on the diagram to bring students into Preschool.

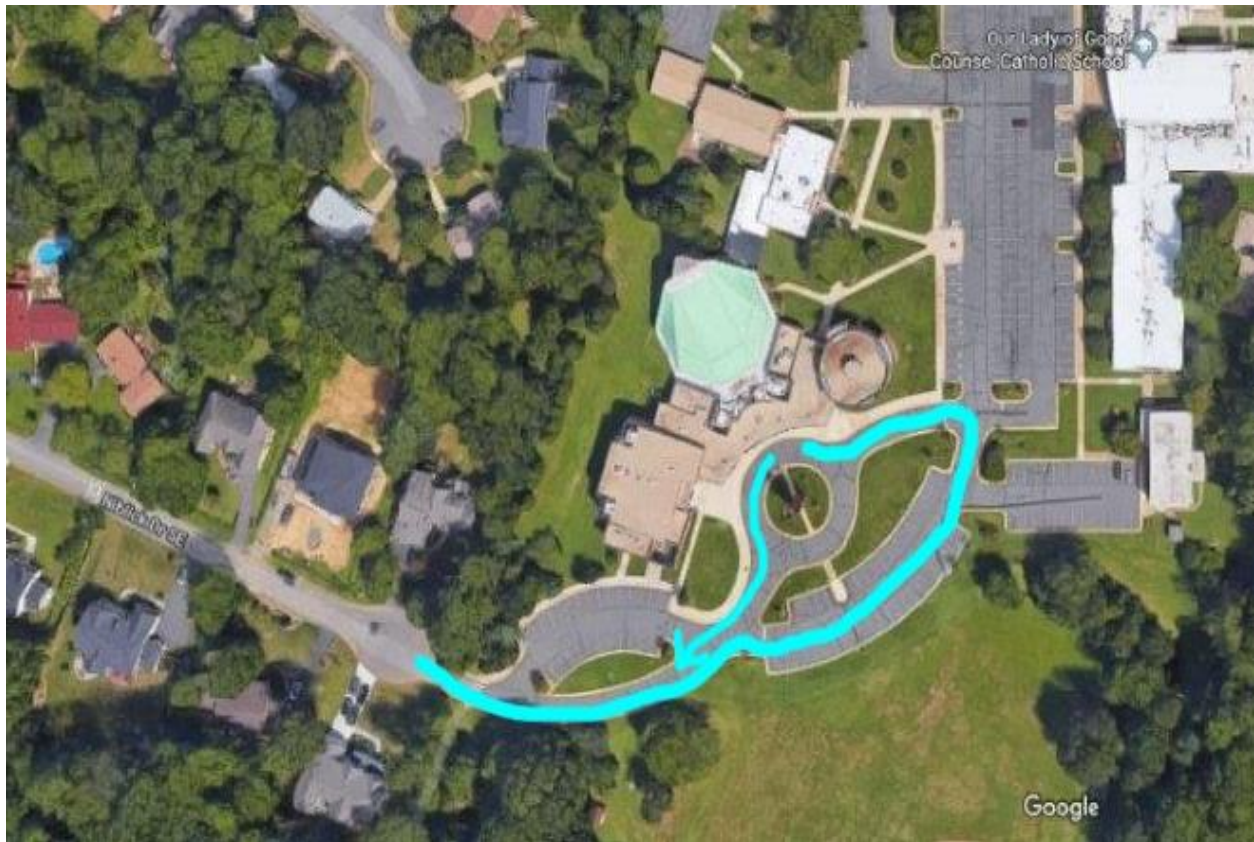
Purple line at the bottom indicates drop-off of students for “big school” and re-entry into the Preschool drop-off line. Parents should have placards available in their windshield.

Black boxes indicate areas that will be blocked off for the safety of children.



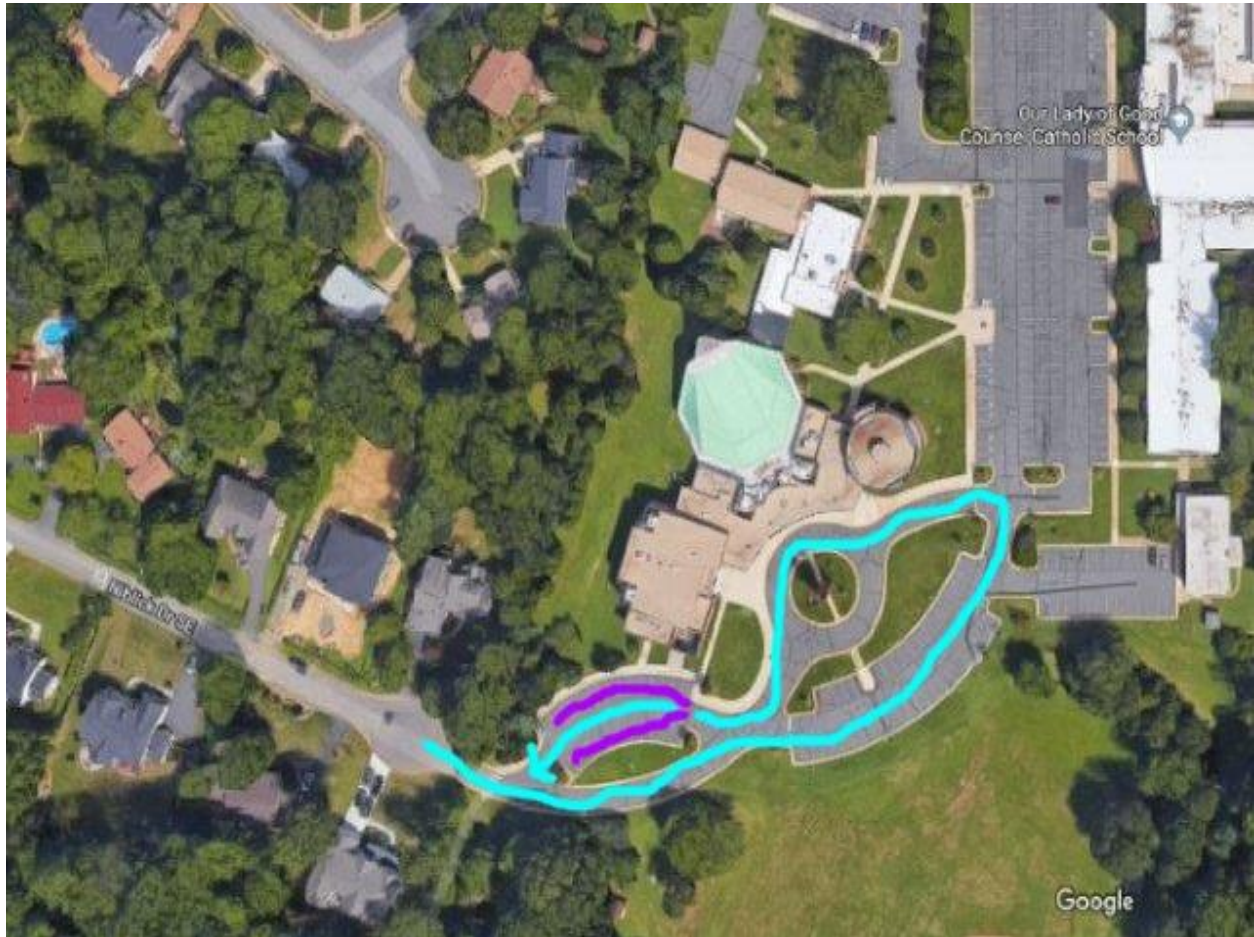
Mid-day Traffic Pattern for Preschool Pickup:

Preschool parents who are picking children up in the middle of the day should plan to pick their child up from the lobby of DeSales Hall following the traffic pattern listed below. Parents should have placards available in their windshield.



Full-day Traffic Pattern for Preschool Pickup:

Preschool parents should follow the traffic pattern below and park accordingly to pick up their Preschool students. Any families that have students in the “big school” will wait in the Preschool parking lot for those students to come across carefully at the 3pm dismissal bell.



Extended Day Pick-up Points:

Are labeled with the triangles below for both the “big school” and for Preschool.

